

California Transportation Commission

March 20, 2014

California Environmental Protection Agency

 **Air Resources Board**

Freight Transport System

Modes:

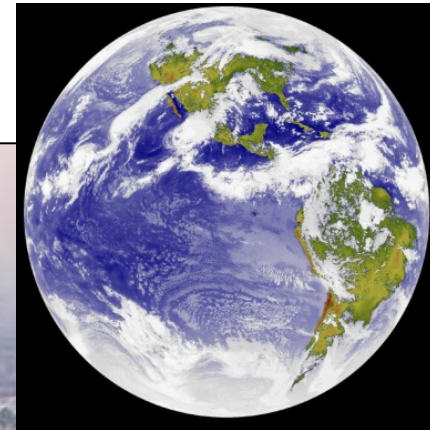


Facilities:

- Seaports
- Airports
- Rail yards & lines
- Distribution centers
- Warehouses
- High traffic roads
- Border crossings

Freight Impacts at Many Levels

Climate change



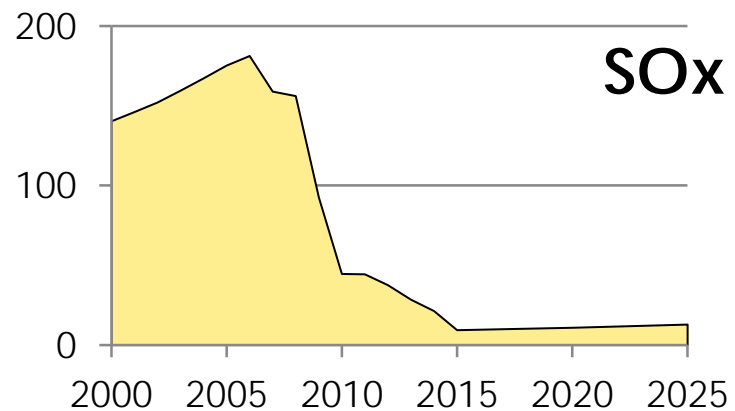
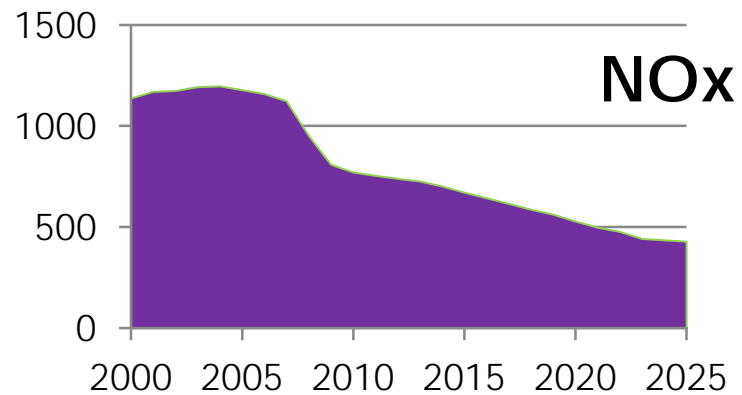
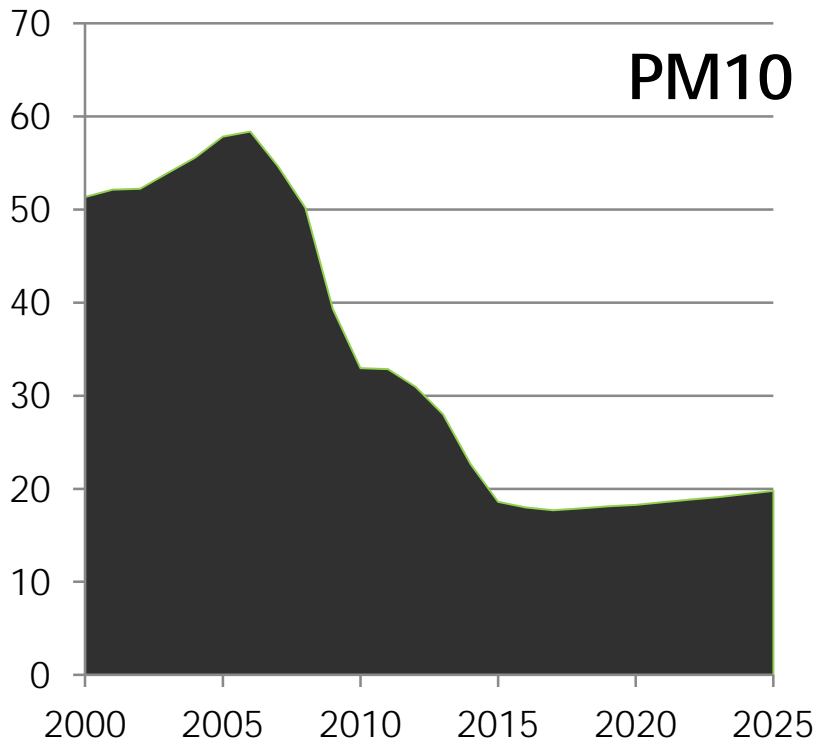
Regional air pollution



Localized health risk

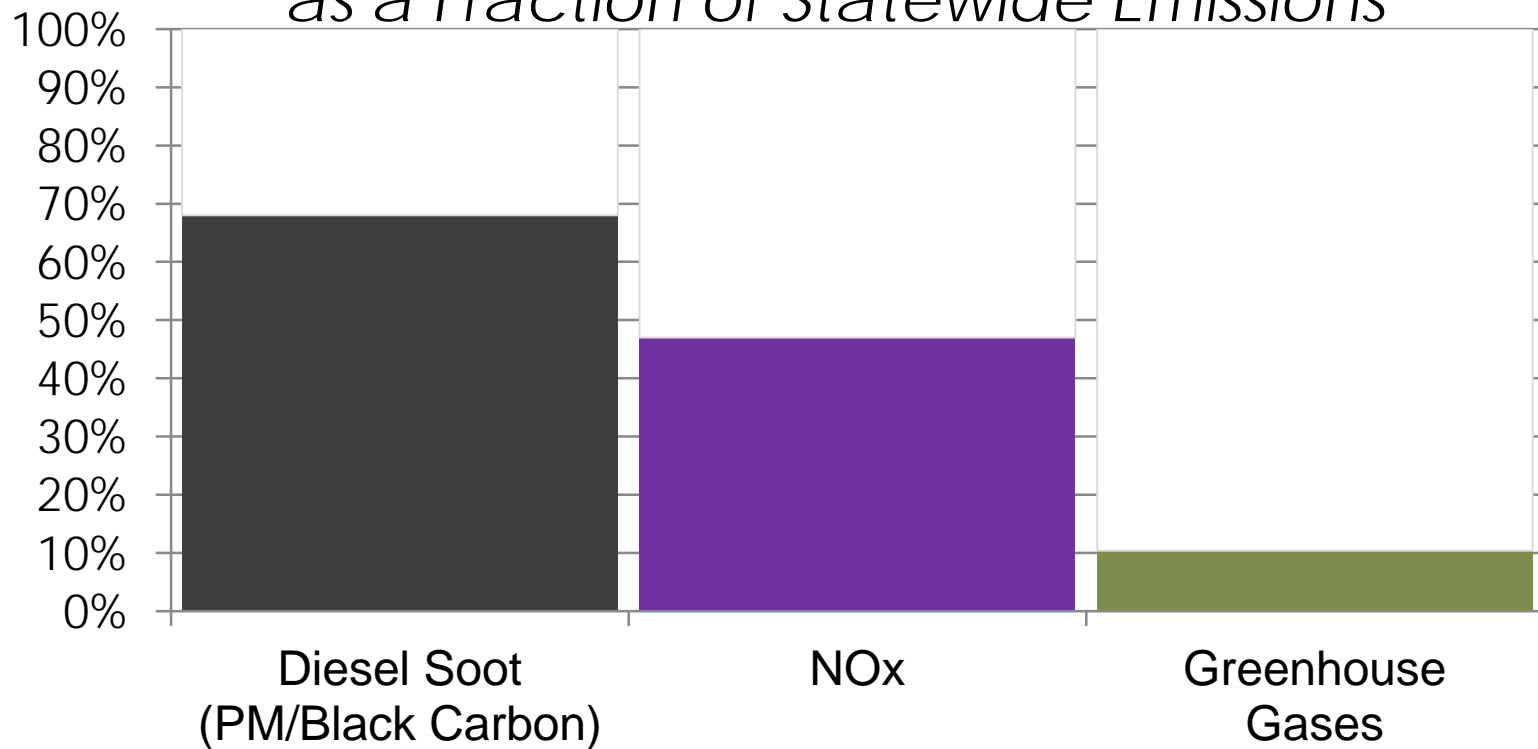


Progress in Reducing Freight Emissions in California (Tons/Day)



Freight is a Significant Contributor to California's Air Pollution

Exhaust Emissions from All Freight Equipment as a Fraction of Statewide Emissions



Sustainable Freight Starts Here

- Improve air quality and public health
- Increase energy security
- Support logistics growth and new jobs
- Maintain ports' competitiveness
- Improve transportation mobility

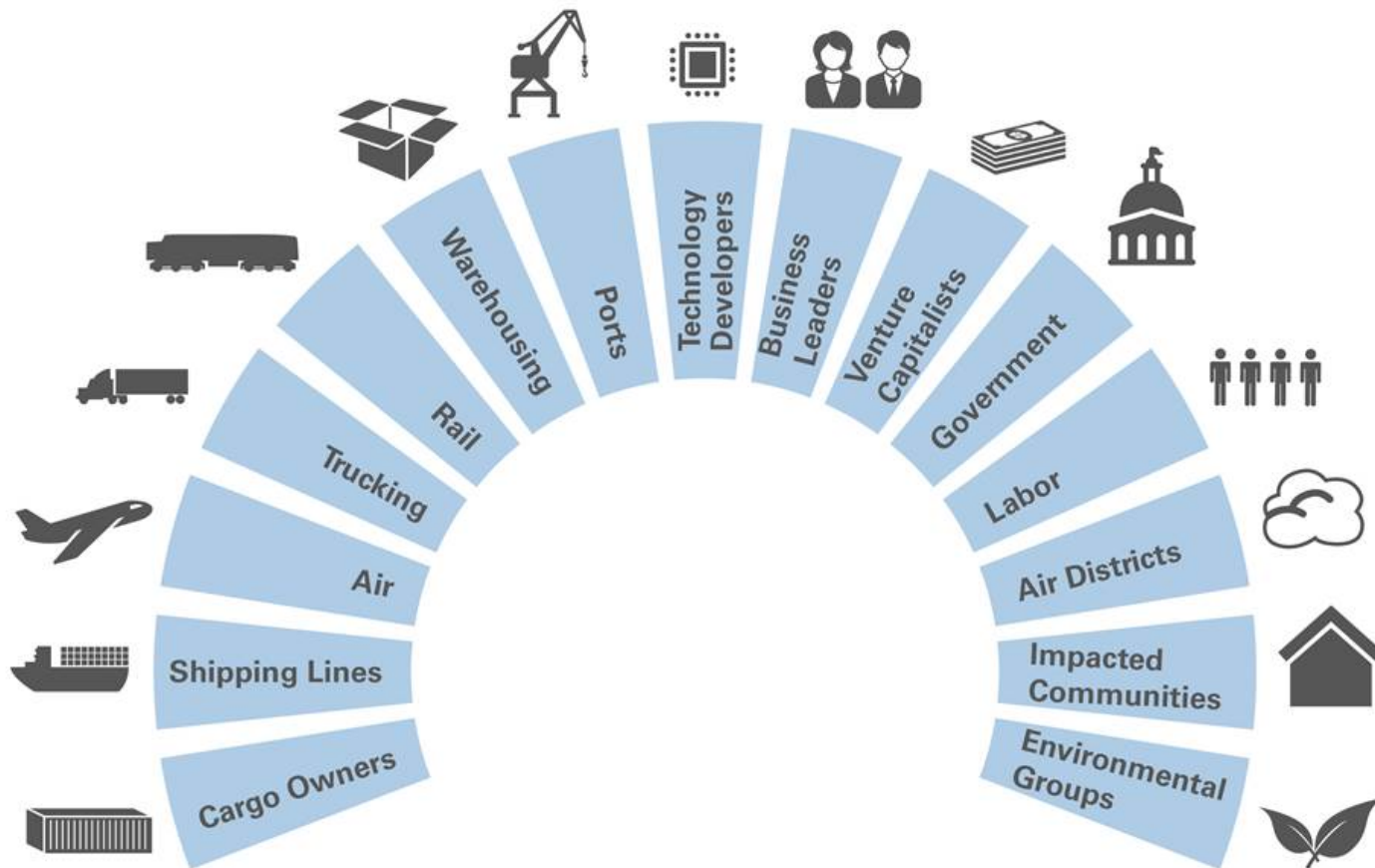
2014 Sustainable Freight Strategy Document

- Freight fundamentals and need for transformation
- Stakeholder concepts for sustainable freight
- Technology assessments
- Efficiency metrics and opportunities
- Principles for freight transportation projects
- Principles for new freight facilities
- Actions needed over next 5 years

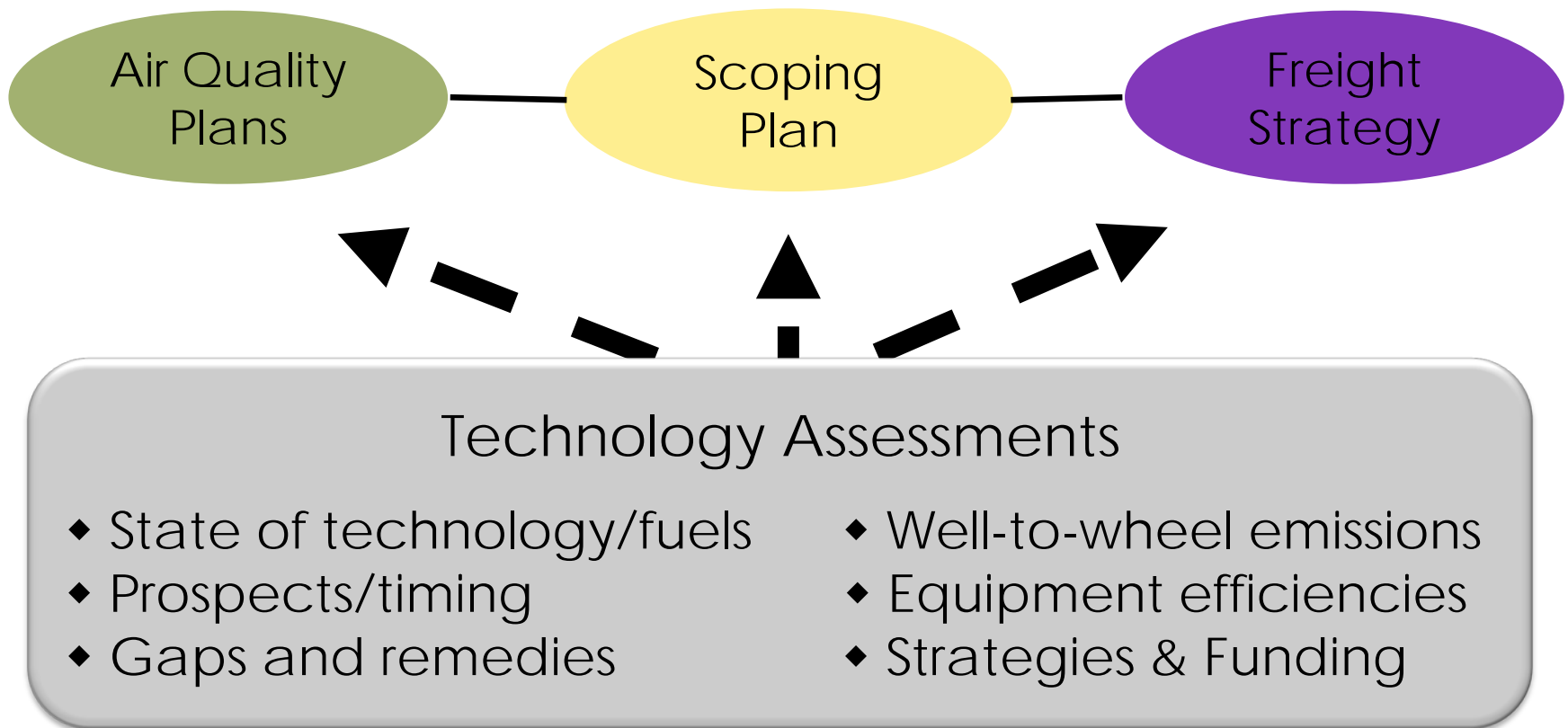
Related State Planning Efforts

- Scoping Plan
- California Freight Mobility Plan
- California Transportation Plan
- State Implementation Plans

Stakeholder Engagement is Critical



Technology Assessments Underway



Sustainable Freight Strategy – 2014 Timeline

When	Focus of Work Effort	Stakeholder Forums
Spring	Stakeholder concepts, technology assessments, efficiency, criteria for transportation projects	Focus groups, community, stakeholder meetings and initial public workshops
Summer	Draft assessments, initial efficiency metrics/options, draft criteria for transportation and freight facilities, outline of measures and actions	Focus groups, community and stakeholder meetings
Fall	Sustainable Freight Strategy draft document and stakeholder feedback	Public workshops, Board meeting

Intersecting the California Freight Advisory Committee

- California Freight Mobility Plan
 - The California Freight Mobility Plan is a separate document with specific objectives from MAP-21
 - ARB and Caltrans staff are coordinating through CFAC to reflect consistent air quality and public health themes and priorities
- Sustainable Freight Strategy

www.arb.ca.gov/gmp/sfti/sfti
freight@arb.ca.gov

California Environmental Protection Agency
 **Air Resources Board**

Douglas Ito, Chief
Freight Transport Branch
916-327-5981
dito@arb.ca.gov